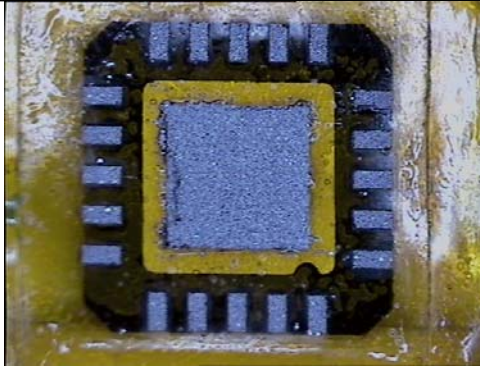
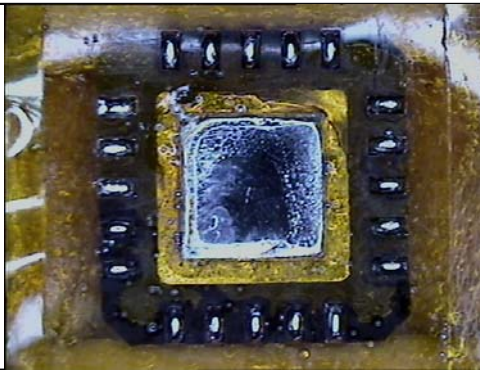


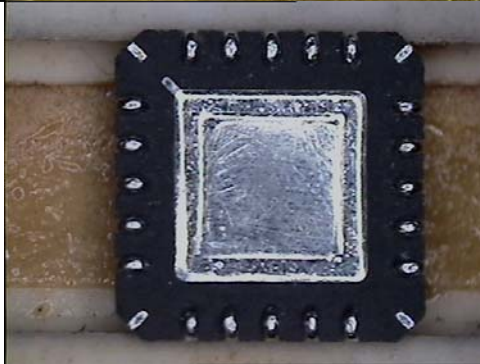
**STEP 1** Remove device from PCB. Wick or scavenge and clean part.



**STEP 2** Place the part StencilMate™ aligning it with part lands and applying pressure to the stencil. Squeegee solder paste with a manual squeegee into the apertures. Clean off surface of stencil.



**STEP 3** Reflow paste based on solder manufacturer's profile.



**STEP 4** Remove StencilMate™ from device clean and inspect



**STEP 5** Inspect to make sure the "bumps" are uniform and consistent on all of the pads.



BEST Inc  
3603 Edison Place  
Rolling Meadows IL 60008  
(847) 797-9250  
[www.solder.net](http://www.solder.net)

StencilMate Instructions 06-2008